

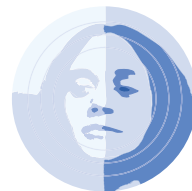
Nervoheel®

The Modern
Homoeopathic Therapy for

Emotional distress

Psychosomatic disorders

Climacteric neurosis



Biologische Heilmittel Heel GmbH
Baden-Baden, Germany
www.heel.com

-Heel

PDF_Nervo_F1_100703 © 2003 by Biologische Heilmittel Heel GmbH, Germany.

-Heel

Nervoheel®



Many people all over the world suffer from restlessness, agitation, and depression. Nearly 75% of people say they experience "severe" stress at least twice a week. Up to 90% of all visits to primary care physicians are for stress-related problems, and job stress is by far the leading cause.

Nervoheel is used by increasing numbers of practitioners all over the globe with great success. More than 80% of patients treated with Nervoheel describe its efficacy as "very good" or "good".¹⁾

Effective and gentle treatment

- Nervous tension
- Sleep disturbances
- Emotional symptoms of menopause

Literature:

- 1) Weiser, W. Erfahrungsbericht zur Anwendung, Wirksamkeit und Verträglichkeit von Nervoheel, not yet published.
- 2) Frase, W. Die Antihomotoxische Behandlung von Darmerkrankungen, Biologische Medizin, 1990, (1): 24-32.
- 3) Smit, A. Hormonal Impairment in Aging Women and Complementary Medicine, Biologische Medizin, 2001, 30(6): 303-6.
- 4) Küstermann, K. Das hyperaktive Kind und andere psychosomatische Erkrankungen, Biologische Medizin, 1994, 23(2): 79-84.

● No known drug interactions

● No known side effects

Unlike other "natural" mood enhancers, Nervoheel does not cause liver damage or photosensitivity.

Broad range of application

Nervoheel can be used successfully not only as monotherapy but also in combination with other medications, especially in treating disorders with psychosomatic components, such as ulcerative colitis or menopausal symptoms.^{2, 3)}

Nervoheel is also suitable for children – in stressful school situations, for example.⁴⁾

Dosage		
Adults	for general use:	1 tablet 3 times daily
	for acute symptoms:	1 tablet every 15 minutes, as needed (several times)
Children	ages 6 to 12:	1 tablet 2 times daily
	ages 12 and up:	1 tablet 3 times daily

Nervoheel® Tablets

Composition: 1 tablet cont.: Acidum phosphoricum D4, Ignatia D4, Sepia officinalis D4, Psorinum-Nosode D12 60 mg each; Kalium bromatum D4, Zincum isovalerianicum D4 30 mg each.

Indications: Psychosomatic disorders, climacteric neurosis, emotional distress.

Contraindications: None known. **Side effects:** None known.

Interactions with other medications: None known.

Dosage and administration: In general, 1 tablet to be dissolved in the mouth 3 times daily.

Package sizes: Packs containing 50 and 250 tablets.

Revised: May 2003.